

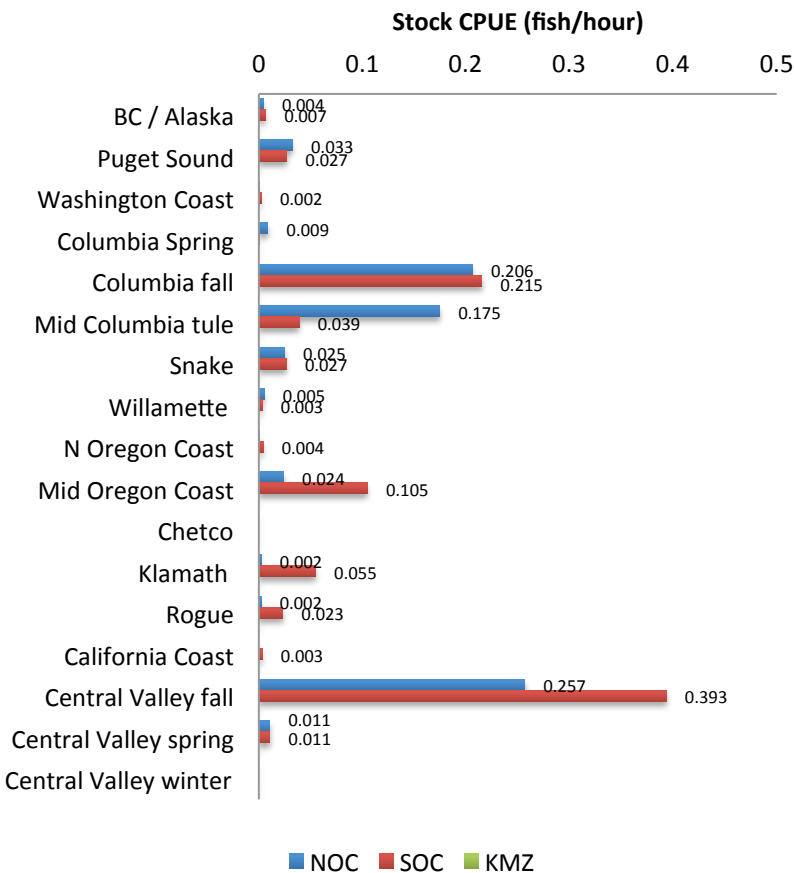
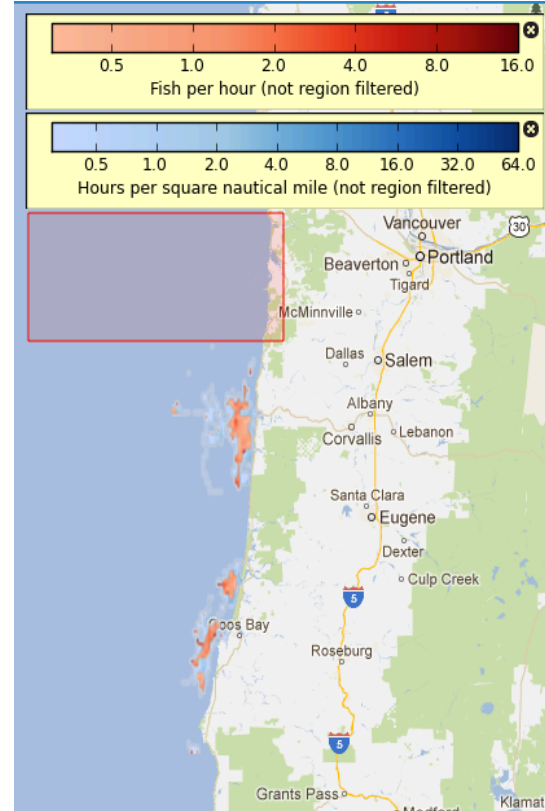
# Project CROOS

## Time Period 2 : May 16 – 31, 2012

### Period 2 Sample Statistics

	NOC	SOC	KMZ
Number hours fished	738.6	770.8	0
Fish caught per hour effort (CPUE)	0.75	0.92	0
Number legal-sized fish sampled	556	705	0
Numbers of fish genotyped	365	281	0
Percent of fish genotyped	66%	40%	100%

To the right, aggregate catch in CPUE (red) and aggregate effort (blue) is shown for the first time period. To protect individual fisherman's data, aggregate catch maps are not shown if fewer than 3 vessels were fishing in a zone in this time period. The average catch per hour in the NOC (0.75) was higher than this time last year (0.65). The average catch per hour for SOC (0.92) was higher than this time last year (0.41).



Shown to the left, effort, catch and genetic stock identification results are combined to generate "catch per hour per stock" estimates.

In the second time period, Central Valley fall was the dominant component of harvest for NOC and SOC. The second largest component of harvest was Columbia fall. Mid Columbia tule are more predominant in the NOC then during the first two weeks in May 2012.

**NOC**=Northern Oregon Coast (Cape Falcon to Florence Jetty)  
**SOC**=Southern Oregon Coast (Florence Jetty to Humbug Mtn)  
**KMZ**=Klamath Management Zone (Humbug Mtn to OR/CA boarder)

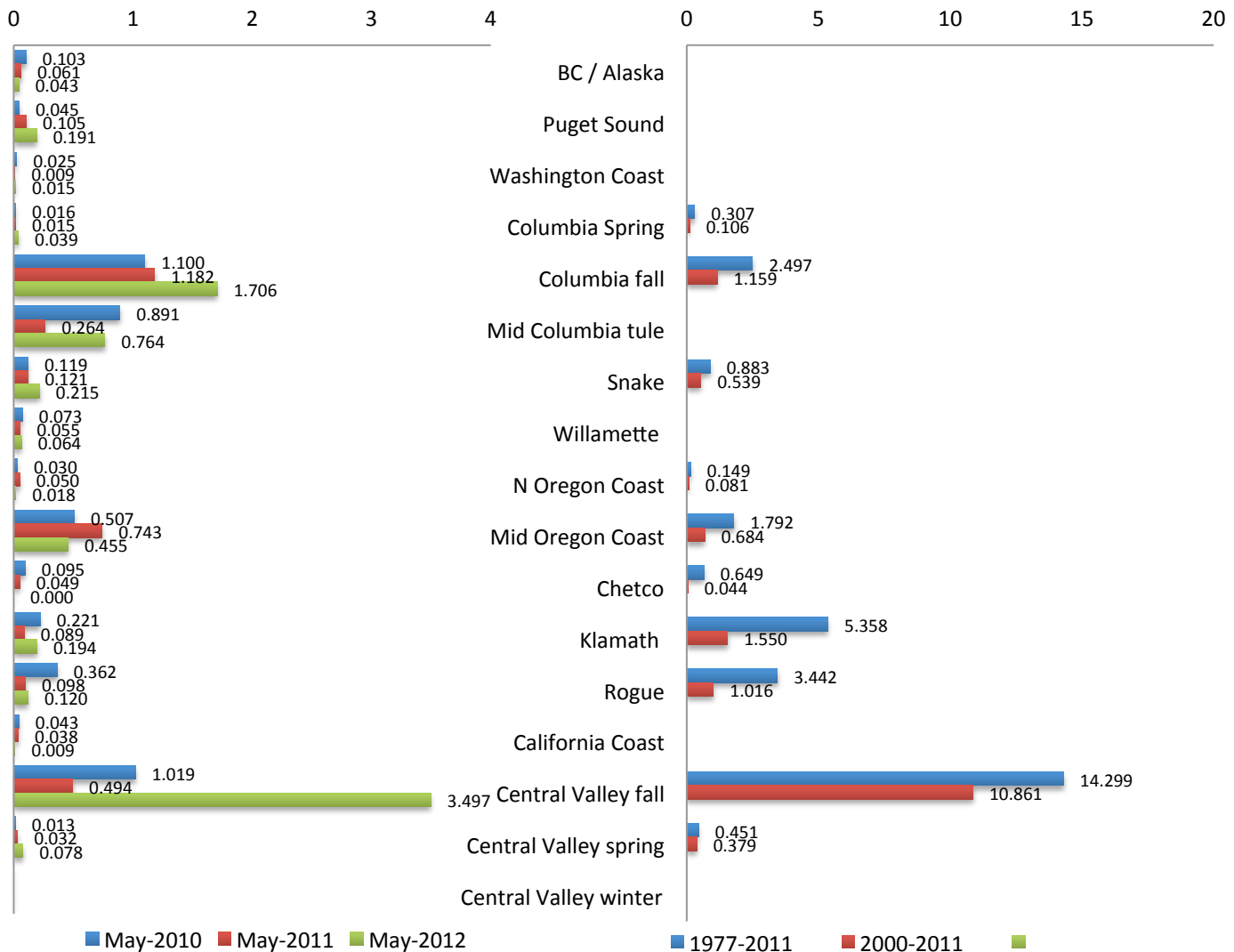
# Project CROOS May Historical Data

## May Sample Statistics

	2010	2011	2012
Number hours fished	1436	560	2332
Fish caught per hour effort (CPUE)	0.598	0.541	0.966
Number legal-sized fish sampled	858	303	2252

**CROOS Chinook Total Catch  
Stock CPUE (fish/hour)**

**Historical CWT Chinook Total Catch  
Stock CPUE (fish/hour)**



The bar graphs above display, effort, catch and genetic stock identification results combined to generate "catch per boat day per stock" estimates for the whole Oregon Coastline sampled by CROOS fisherman (bar graph on the left) in 2010, 2011 and 2012 and also included are the historical CWT estimates combined for May 1977 to 2011 and 2000 to 2011 (bar graph on the right). Note that the scale on each bar graph is different.

As one can see Central Valley fall stock has a higher catch rate in 2012 compared to recent years but is still lower than the historical CWT data. Mid Oregon Coast is not as predominant as seen in 2011 and compared to the CWT data for the month of May, while Mid Columbia tule stock CPUE is relatively similar in May 2012 to May 2010.