

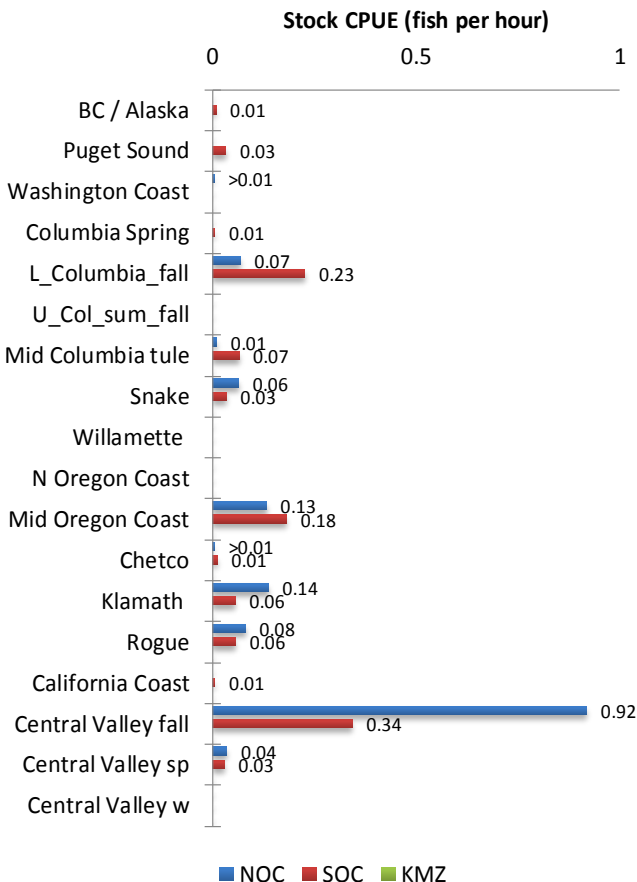
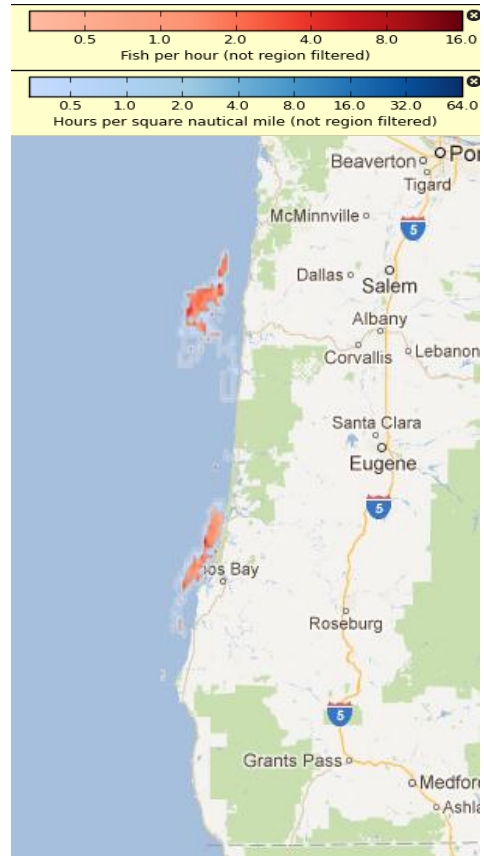
# Project CROOS

## Time Period 8 : August 16 – 31th, 2012

### Period 8 Sample Statistics

	NOC	SOC	KMZ
Number hours fished	426.4	704.6	0
Fish caught per hour effort (CPUE)	1.45	1.06	0
Number legal-sized fish sampled	620	744	0
Numbers of fish genotyped	285	288	0
Percent of fish genotyped	46%	39%	100%

To the right, aggregate catch in CPUE (red) and aggregate effort (blue) is shown for the eighth time period. To protect individual fisherman's data, aggregate catch maps are not shown if fewer than 3 vessels were fishing in a zone in this time period. The average catch per hour in the NOC (1.45) was higher than this time last year (0.53). The average catch per hour for SOC (1.06) was higher than this time last year (0.33).



Shown to the left, effort, catch and genetic stock identification results are combined to generate "catch per hour per stock" estimates

In the eighth time period, Central Valley fall was the dominant component of harvest for the NOC and the SOC. In the NOC the second largest component of harvest was Klamath and in the SOC the second largest component of harvest was Lower Columbia Fall.

**NOC**=Northern Oregon Coast (Cape Falcon to Florence Jetty)  
**SOC**=Southern Oregon Coast (Florence Jetty to Humbug Mtn)  
**KMZ**=Klamath Management Zone (Humbug Mtn to OR/CA boarder)

# Project CROOS

## August Historical Data

### August CROOS Sample Statistics

	2010	2011	2012
Number days fished	412	158	188
Fish caught per boat day (CPUE)	2.920	3.266	9.638
Number legal-sized fish sampled	1203	516	1812

Here we show the combined (2010, 2011, 2012) August CPUEs for 17 stock groups estimated from GSI sampling. GSI data show Central Valley Fall stock was nearly absent from Oregon fisheries in 2010 and 2011. It is starting to make a comeback in 2012. The results for August differ from May, June and July 2012, Mid Oregon Coast is more predominant to what was seen in 2011.

