

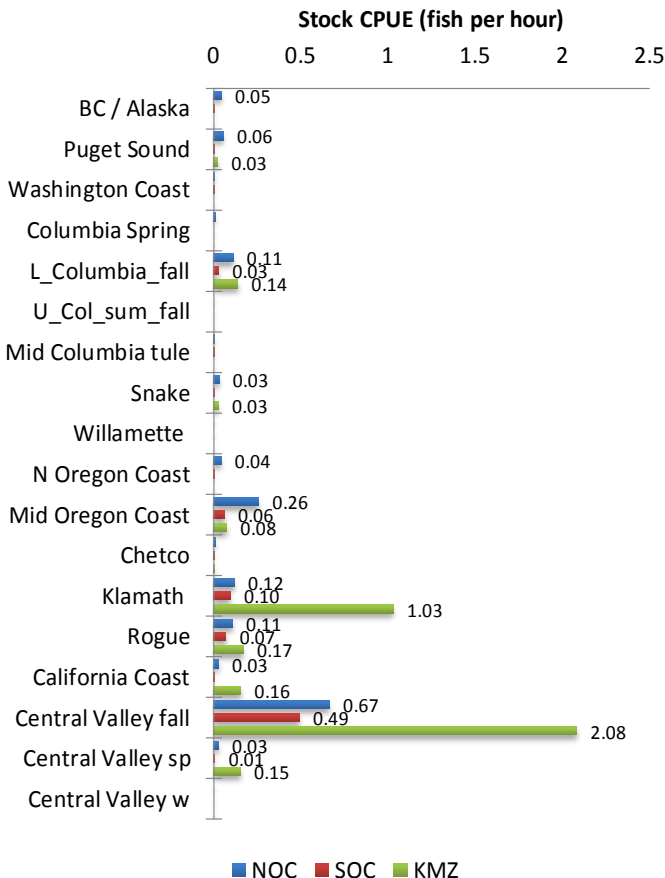
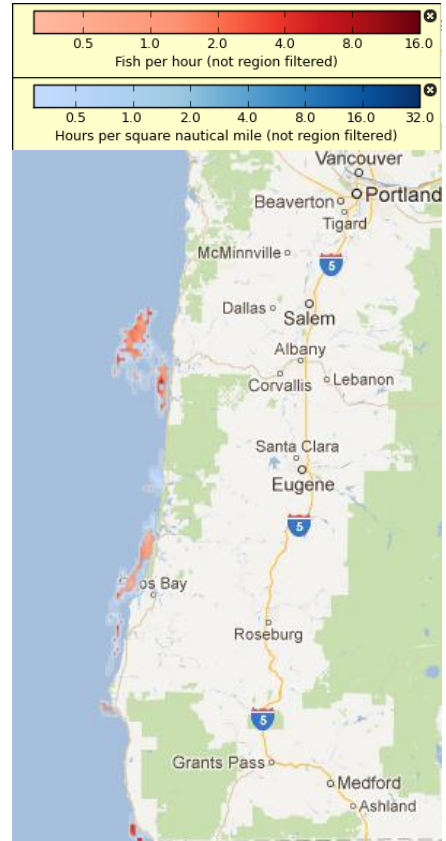
Project CROOS

Time Period 9 : September 1st – 17th, 2012

Period 9 Sample Statistics

	NOC	SOC	KMZ
Number hours fished	355.4	400.7	39.4
Fish caught per hour effort (CPUE)	1.56	0.78	3.88
Number legal-sized fish sampled	400	305	147
Numbers of fish genotyped	400	305	147
Percent of fish genotyped	100%	100%	100%

To the right, aggregate catch in CPUE (red) and aggregate effort (blue) is shown for the ninth time period. To protect individual fisherman's data, aggregate catch maps are not shown if fewer than 3 vessels were fishing in a zone in this time period. The average catch per hour in the NOC (1.56) was higher than this time in 2010 (0.24). The average catch per hour for SOC (0.78) was higher than this time in 2010 (0.24). The average catch per hour in the KMZ (3.88) was higher than this time in 2010 (0.24).



Shown to the left, effort, catch and genetic stock identification results are combined to generate "catch per hour per stock" estimates

In the ninth time period, Central Valley fall was the dominant component of harvest for the NOC, the SOC and the KMZ. In the NOC the second largest component of harvest was Mid Oregon Coast and in the SOC and KMZ the second largest component of harvest was Klamath.

NOC=Northern Oregon Coast (Cape Falcon to Florence Jetty)
SOC=Southern Oregon Coast (Florence Jetty to Humbug Mtn)
KMZ=Klamath Management Zone (Humbug Mtn to OR/CA boarder)

Project CROOS

September Historical Data

September CROOS Sample Statistics

	2010	2011	2012
Number days fished	96	0	116
Fish caught per boat day (CPUE)	1.833	0	8.784
Number legal-sized fish sampled	176	0	852

Here we show the combined (2010, 2011, 2012) September CPUEs for 17 stock groups estimated from GSI sampling. There was no sampling September 2011. GSI data show Central Valley Fall stock was nearly absent from Oregon fisheries in 2010. It is starting to make a comeback in 2012.

