

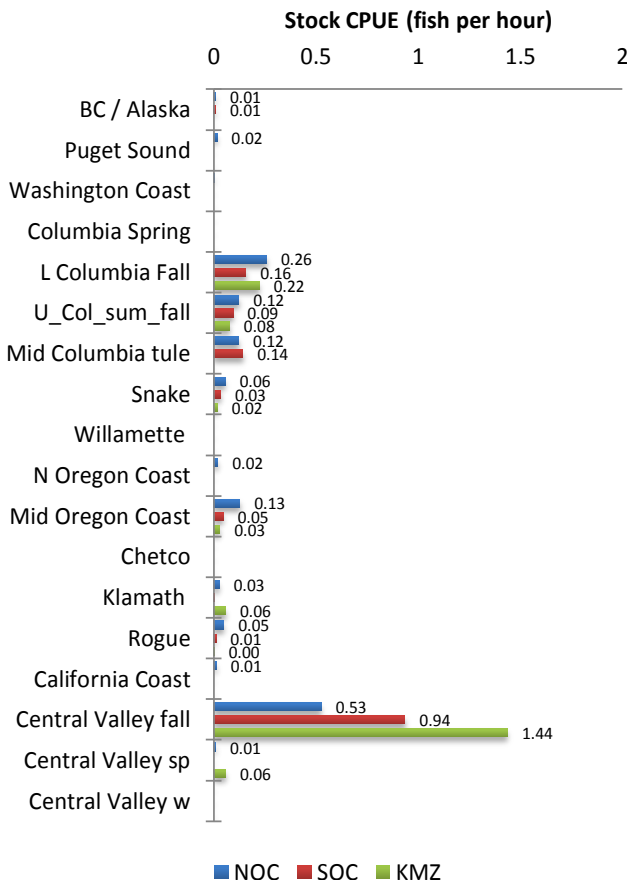
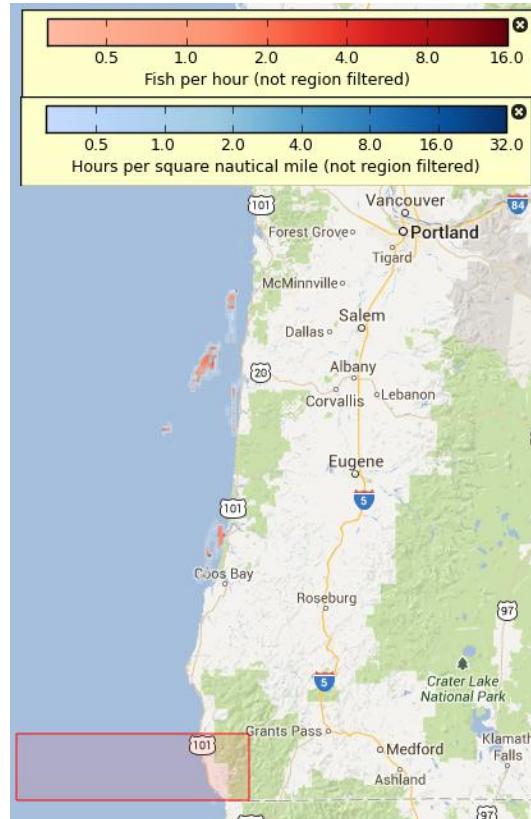
Project CROOS

Time Period 3 : July 1st– July31st, 2013

Period 3 Sample Statistics

	NOC	SOC	KMZ
Number hours fished	209.6	156.3	44.4
Fish caught per hour effort (CPUE)	1.23	1.34	1.85
Number legal-sized fish sampled	258	210	82
Numbers of fish genotyped	258	210	82
Percent of fish genotyped	100%	100%	100%

To the right, aggregate catch in CPUE (red) and aggregate effort (blue) is shown for the third time period. To protect individual fisherman's data, aggregate catch maps are not shown if fewer than 3 vessels were fishing in a zone in this time period. The average catch per hour in the NOC (1.23) was higher than this time in 2012 (1.06). The average catch per hour for SOC (1.34) was higher than this time in 2012 (0.63). The average catch per hour in the KMZ (1.85) was higher than this time in 2012(1.57)



Shown to the left, effort, catch and genetic stock identification results are combined to generate "catch per hour per stock" estimates

In the third time period, Central Valley fall was the dominant component of harvest for the NOC, SOC and KMZ. In the NOC, SOC and KMZ the second largest component of harvest was Lower Columbia Fall.

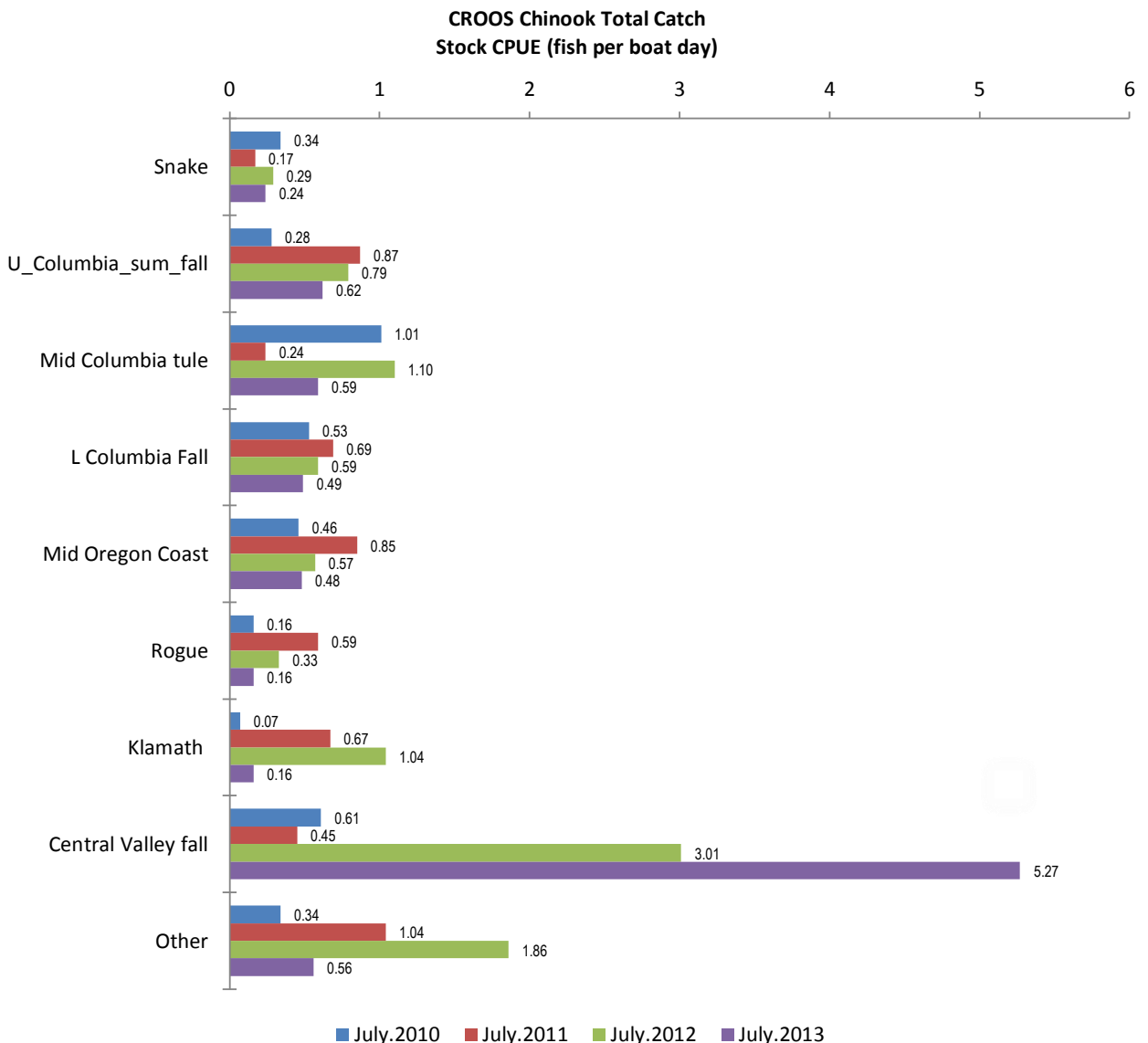
NOC=Northern Oregon Coast
(Cape Falcon to Florence Jetty)
SOC=Southern Oregon Coast
(Florence Jetty to Humbug Mtn)
KMZ=Klamath Management Zone
(Humbug Mtn to OR/CA boarder)

Project CROOS July Historical Data

July CROOS Sample Statistics

	2010	2011	2012	2013
Number days fished	128	61	65	64
Fish caught per boat day (CPUE)	3.81	3.07	7.52	8.59
Number legal-sized fish sampled	488	187	489	550

Here we show the combined (2010, 2011, 2012,2013) July CPUEs for 9 stock groups estimated from GSI sampling.. GSI data show Central Valley Fall stock was nearly absent from Oregon fisheries in 2010 and 2011. It is starting to make a comeback in 2012 an 2013. Mid Columbia tule and Klamath stocks are not as predominant as seen in 2012 at this time period.



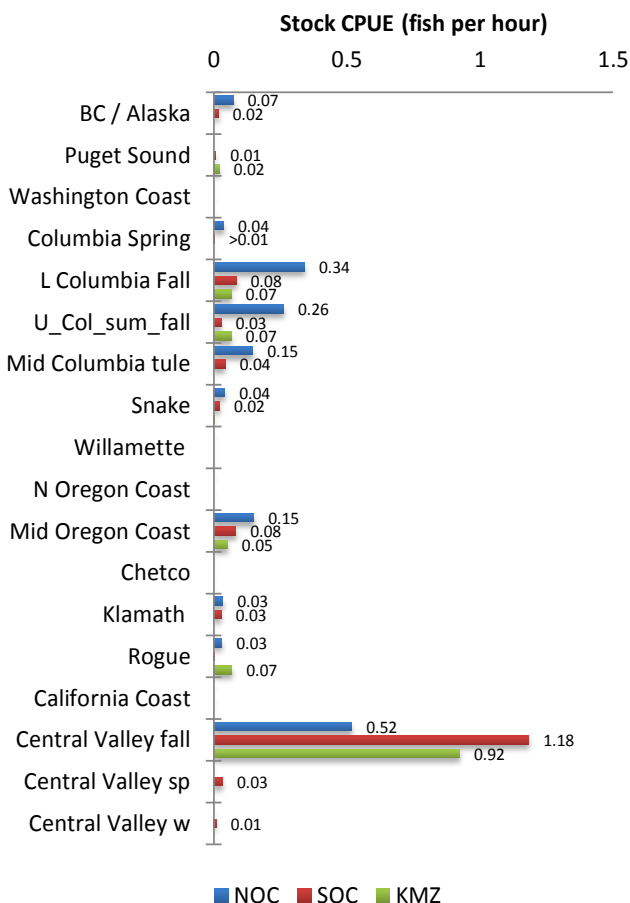
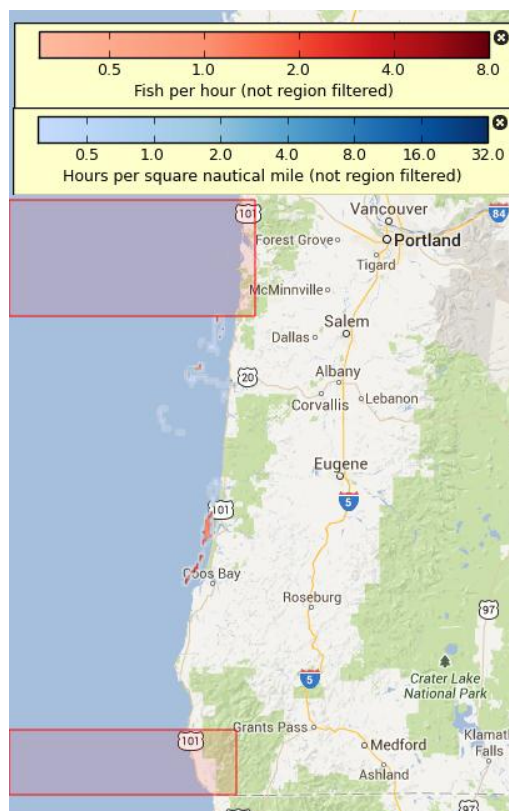
Project CROOS

Time Period 4 : August 1st– August 31st, 2013

Period 4 Sample Statistics

	NOC	SOC	KMZ
Number hours fished	62.2	183.8	16.8
Fish caught per hour effort (CPUE)	1.37	1.51	1.13
Number legal-sized fish sampled	85	278	19
Numbers of fish genotyped	85	278	19
Percent of fish genotyped	100%	100%	100%

To the right, aggregate catch in CPUE (red) and aggregate effort (blue) is shown for the fourth period. To protect individual fisherman's data, aggregate catch maps are not shown if fewer than 3 vessels were fishing in a zone in this time period. The average catch per hour in the NOC (1.37) was slightly higher than this time in 2012 (1.28). The average catch per hour for SOC (1.51) was higher than this time in 2012 (0.93). The average catch per hour for the KMZ (1.13) was lower than this time in 2012 (2.57)



Shown to the left, effort, catch and genetic stock identification results are combined to generate "catch per hour per stock" estimates

In the fourth time period, Central Valley fall was the dominant component of harvest for the NOC, SOC and KMZ. In the NOC the second largest component of harvest was Upper Columbia Summer and Fall. In the SOC the second largest component of harvest was split between Lower Columbia Fall and Mid Oregon Coast. In the KMZ the second largest component of harvest was Lower Columbia Fall and Upper Columbia Summer and Fall.

NOC=Northern Oregon Coast (Cape Falcon to Florence Jetty)
SOC=Southern Oregon Coast (Florence Jetty to Humbug Mtn)
KMZ=Klamath Management Zone (Humbug Mtn to OR/CA boarder)

Project CROOS

August Historical Data

August CROOS Sample Statistics

	2010	2011	2012	2013
Number days fished	412	158	188	48
Fish caught per boat day (CPUE)	2.92	3.27	9.64	8.15
Number legal-sized fish sampled	1203	516	1812	382

Here we show the combined (2010, 2011, 2012,2013) August CPUEs for 9 stock groups estimated from GSI sampling.. GSI data show Central Valley Fall stock in 2012 and 2013 have similar CPUE's in the month of July, while the Klamath and Rogue stocks are less predominant than in 2012.

